

**ENVIRONMENTAL ACTIVITIES**

**TIME:** \_\_\_\_\_

NAME: .....

--	--	--	--	--	--

LEARNERUPI:      GENDER:    BOY                  GIRL

SCHOOLNAME .....

**Answeralquestionsinthespacesprovided.**



1. Floodingmakespeopleto? \_\_\_\_\_

**(migrate, live)**

2. Weharvestduring \_\_\_\_\_ season?

**(rainy, dry)**

3. Whenthereisnorainanimals

become \_\_\_\_\_ **(fat, thin)**

4. Weshould \_\_\_\_\_ water.

**(recycle, waste)**

5. Weshouldwear \_\_\_\_\_ clothes

whenit'sraining? **(wet, warm)**

6. Weshoulddrinkalotof \_\_\_\_\_

duringdryseason? **(tea, water)**

7. Whathastheweathercausedinthepicture

below?

8. Wheredoyougetwaterat

home? \_\_\_\_\_ **(river, trees)**

9. Wemakewatersafefordrinking

through? \_\_\_\_\_ **(boiling, freezing)**

10. Thereare \_\_\_\_\_ typesofsoil.

**(two, three, one)**

11. \_\_\_\_\_ soilhasfineparticles

**(clay, loam, sand)**

12. Thesmoothnessorroughnessofsoilis

knownas \_\_\_\_\_ **(colour, texture, size)**

**Name3thingsthatplantsgiveus**

13. \_\_\_\_\_

14. \_\_\_\_\_

15. \_\_\_\_\_

16. Weshouldprotectourselvesfromdangerous

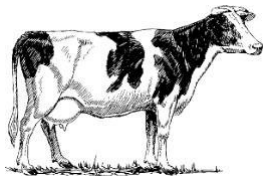
plants by wearing? \_\_\_\_\_

**(gloves, blanket)**

17. \_\_\_\_\_ is a flowering plant?

**(sunflower, pine)**

**Name three things that the animal below give us**



18. \_\_\_\_\_

19. \_\_\_\_\_

20. \_\_\_\_\_

21. We should \_\_\_\_\_ ourselves when it is very cold. **(warm, run, jump)**

22. In the past most people used \_\_\_\_\_ to cook. **(gas, firewood, kerosene)**

23. Which one is a source of heat? \_\_\_\_\_ **(air, water, firewood)**

24. We use \_\_\_\_\_ to put out fire when there is a fire outbreak. **(kerosene, oil, fire extinguisher)**

25. \_\_\_\_\_ can cause a fire outbreak. **(clothes, kerosene, water)**

26. \_\_\_\_\_ gives us a companion in the house. **(cow, cat)**

27. Which one is not a safe place? \_\_\_\_\_ **(highway, home, school)**

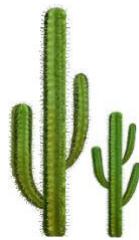
28. We should \_\_\_\_\_ strangers to our parents, guardians or teachers. **(report, forgive, forget)**

29. We should not leave the tap \_\_\_\_\_ to

avoid wasting water. **(running, pouring)**

30. We should not \_\_\_\_\_ under a tree when it's raining. **(shelter, cut)**

31. The type of plant below is called?



\_\_\_\_\_ **(flowering, thorny)**

32. Which soil is best for farming? \_\_\_\_\_ **(clay, sand, loam)**

33. **On which weather day do we use the object below?**



\_\_\_\_\_ **(windy, rainy)**