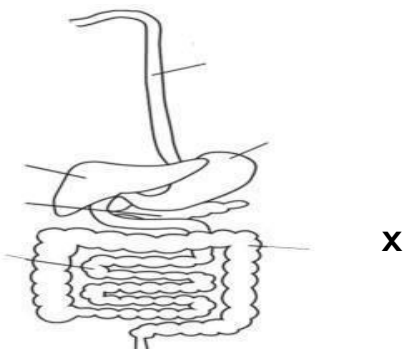


EDU SERIES 2021

SCIENCE STD FIVE (5)

Time : 1 hr 40 Mins

1. Which part of the breathing system is correctly matched with its function.
A. Nose – warms air
B. Lungs –keeps trachea open
C. Diaphragm – cleans air
D. Trachea – gases exchange
2. The diagram below represents digestive system in human beings.



The part marked X is called __

- A. Large intestines
 - B. Small intestines
 - C. Oesophagus
 - D. Duodenum
3. Which part of digestive system **cannot** produce digestive juices?
A. Mouth B. Duodenum
C. Stomach D. Small intestine
 4. Which type of tooth is shown below?



- A. Molars B. Canine
- C. Incisors D. Premolars

5. Which part is found on the arm.
A. Toe B. Knee
C. Hand D. Foot
6. Medicine should be stored __
A. Far from children
B. In soda bottles
C. In one container
D. In freezers
7. Which date is important when handling medicine?
A. Expiry date
B. Manufacturing date
C. Delivery date
D. Date bought
8. Which one of the following is NOT a way of HIV transmission?
A. Blood transfusion
B. Mother to child
C. Sharing food
D. Open wounds
9. Which two stages of HIV/AIDS will the person look sick.
A. Incubation and window
B. Window and symptomatic
C. Incubation and symptomatic
D. Full blown and symptomatic
10. The tooth problem that form holes in teeth is called __
A. Tooth decay
B. Tooth cavity
C. Gum disease
D. Bad smell
11. Which food helps to make teeth strong.
A. Cakes B. Milk
C. Biscuits D. Sweets
12. Which one correctly shows green and non green plants.

Green

non green

- A. Fern cypress
- B. Mushroom algae
- C. Mould toadstool
- D. Oxalis mushroom

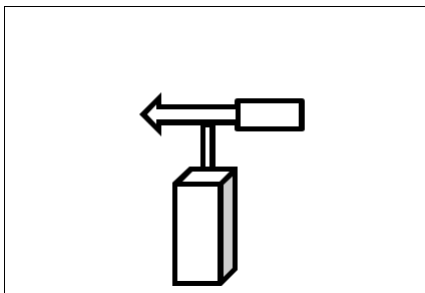
13. Maize and grass are ___
- A. Non green plants
 - B. Cash crops
 - C. Flowering plants
 - D. Non flowering plants

14. Onions store food in the ___
- A. Flowers B. Leaves
 - C. Stem D. Roots

15. Maize, rice and millet are ___
- A. Cereals B. Legumes
 - C. Tubers D. Vegetables

16. Which one is NOT of cash crops.
- A. Fruits B. Beverages
 - C. Oil crops D. Fibre crops

17. The draw weather instrument is called ___

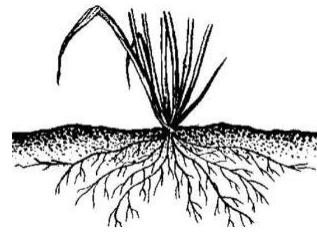


- A. Windsock
- B. Thermometer
- C. Wind vane
- D. Raingauge

18. Which material is used to construct a windsock?
- A. Medicine bottle
 - B. Plastic bottles
 - C. Sheet of metals
 - D. Strong polythen bag

19. Nimbus clouds ___
- A. Show fine weather
 - B. Is a sign of drought

- C. Bring rainfall
 - D. Indicates strong winds
20. Which plant has the type of roots



- A. Carrot B. Beans
- C. Maize D. Potato

21. Which one of these animals is an invertebrate?

- A. Snake B. Fish
- C. Millipede D. Toad

22. Which animal has the following listed characteristics?

- (i) Gives birth
- (ii) Suckles young ones
- (iii) Body covered with hair

- A. Mammal
- B. bird
- C. Reptiles
- D. Amphibian.

23. Which small animal is correctly matched with the number of legs.

- A. Crab – 10 legs
- B. Spider – 6 legs
- C. Grass hopper – 8 legs
- D. Centipede – 4 legs

24. Which of the following is NOT a characteristic of Animals.

- A. Remove waste materials
- B. Reproduce young ones
- C. Move from place to place
- D. Make their own food

25. Which of these animals are correctly classified according to their products?

	POULTRY	SHEEP	GOAT
A.	Beef	Wool	Mutton
B.	Broiler	Mutton	Milk
C.	Layers	Milk	Wool
D.	Beef	Mutton	Milk

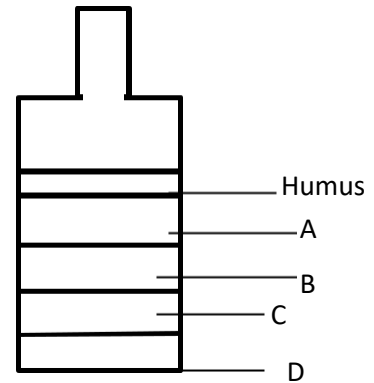
26. The feeling of soil between the fingers is called ____
- Texture
 - Drainage
 - Capillarity
 - Retention
27. The following are steps followed when carrying out experiment on drainage in soils.

- Put cotton wool in the funnel
- Pour water in the funnel
- Put soil in the funnel

Arrange the steps from the **first** to the **last** step.

- (i) (ii) (iii)
 - (iii) (ii) (i)
 - (i) (iii) (ii)
 - (ii) (iii) (i)
28. Which soil is the BEST in retention of water?
- Loamy
 - Clay
 - Sandy
 - Pebbles
29. Which component of soil MAINLY makes the soil good for farming.
- Air
 - Organic matter
 - Rocky particles
 - Animals

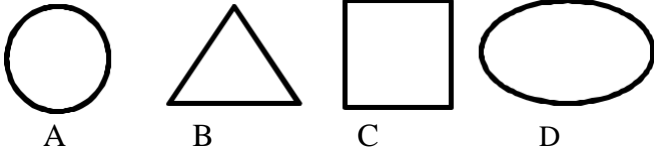
30. Which layer of components of soil has water



31. Which food nutrient is found in fruits?
- Minerals
 - carbohydrate
 - Proteins
 - Vitamins
32. Which one is important in removing waste food from our bodies?
- Fibre
 - Iron
 - Water
 - Calcium
33. Which deficiency disease is correctly matched with the prevention?
- Anaemia – spinach/liver
 - Kwashiorkor – maize/ rice
 - Rickets – fish/ meat
 - Marasmus – milk/omena
34. Std 4 pupils listed foods that can make balanced diet. Who was CORRECT?
- Mashimero – meat, milk, chapatti
 - Likarai – rice, chicken, potatoes
 - Anyango – potatoes, cabbage, rice
 - Moraa – githeri, avocado
35. Which maintenance practice of simple tools helps in safety and prevents accidents.
- Cleaning after use
 - Oiling and greasing
 - Proper use
 - Proper storage

36. Which simple tool is correctly matched with the use.
- A. Knife – harvesting maize
 - B. Jembe – cutting wood
 - C. Hammer – driving nails
 - D. Panga – cutting vegetables

37. The best shape for wheels is ___



38. Pencils, maize cobs and round sticks can make ___
- A. Wheels
 - B. Rollers
 - C. Kites
 - D. Models
39. Which one is a source of water?
- A. Tank
 - B. Tap
 - C. Rain
 - D. Tankers
40. Which one uses water for transport?
- A. Aeroplane
 - B. Bus
 - C. Boat
 - D. Train
41. Using water for enjoyment is called
- A. Fountains
 - B. Recreational
 - C. Domestic
 - D. Industrial
42. Which one of the following is NOT an importance of lighting a house?
- A. Discourage pests
 - B. See clearly
 - C. Read comfortably
 - D. Warming ourselves

43. Which one is an artificial way of lighting a house?
- A. Window
 - B. Translucent roofs
 - C. Doors
 - D. Electricity
44. Which one is a source of heat?
- A. Moon
 - B. Torch
 - C. Gas
 - D. Fire fly
45. Which one is used for cooking and drying?
- A. Heat
 - B. Light
 - C. Sound
 - D. Sky light
46. Which special sound calls for help?
- A. Siren
 - B. Bell
 - C. Hooting
 - D. Screams
47. Which material can float and then sink when crushed.
- A. Wood
 - B. Bottle top
 - C. Papers
 - D. Stone
48. Wax floats on water because of ___
- A. Shape
 - B. Size
 - C. Material
 - D. Colour
49. Pressure in liquids depends on ___
- A. Height
 - B. Depth
 - C. Size
 - D. Liquid
50. Which one is a good use of moving air?
- A. Winnowing
 - B. felling trees
 - C. Blowing away soil
 - D. Blowing roof off