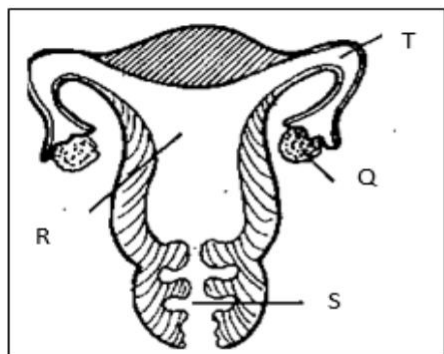


**EDU SERIES EXAM**  
**SCIENCE STD 6**

- Which of the following is NOT a female reproductive part?
  - Vagina
  - urethra
  - Uterus
  - Oviduct
- Which part of the reproductive system is correctly matched with the function?



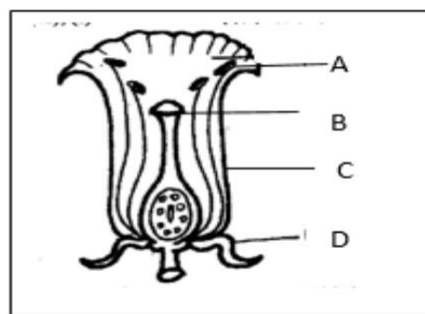
PART	FUNCTION
A. T	fertilization site
B. S	development of young one
C. R	release female eggs
D. Q	passage of a baby

- Which physical changes correctly describes those for girls and boys ONLY.

	BOYS	GIRLS
A.	wet dreams	enlargement of breast
B.	broadening of hips	hair grow on the face
C.	menstruation	wet dreams
D.	broadening of shoulders	voice breaks

- Digestion of food begins in the \_
  - Mouth
  - Stomach
  - Small intestine

- Duodenum
- Which part of breathing system is kept open by hard C shaped rings?
    - Diaphragm
    - Nose
    - Lungs
    - Trachea
  - Tooth used for grinding and chewing is \_\_
    - Sharp
    - Rough
    - Long
    - Flat
  - Which part of a flower is used for attracting insects?



- Which one of the following is the **first** step in fertilization in plants?
  - Pollination
  - Fusion
  - Pollen tube is formed
  - Bursting of pollen
- In maize seed an endosperm is used for \_\_\_\_
  - Development of an embryo
  - Protection of inner parts
  - Sucks in water and air
  - Storage of food.
- Pupils brought the following materials to investigate condition necessary for seed germination.
  - Cotton wool
  - Water
  - Tins
  - Seeds

Which condition necessary for seed germination were they finding out?

- A. Air
- B. Warmth
- C. Water
- D. Soil

11. Which plant is a food crop?

- A. Sunflowers
- B. Tea
- C. Wheat
- D. Coconut

12. A weed with green fruits that turn yellow when ripe

- A. Has thorny stems
- B. Has yellow or purple leaves
- C. Has sticky seeds
- D. Is eaten as vegetables

13. Which plants stores food in the same part as a cabbage?

- A. Carrot
- B. Onion
- C. Potato
- D. Sugarcane

14. Which one is an immunisable diseases.

- A. Tuberculosis
- B. HIV/AIDS
- C. Bilharzia
- D. Malaria

15. Std 6 pupils listed signs and symptoms of certain diseases.

- (i) Chest pains
- (ii) Vomiting
- (iii) Prolonged coughing
- (iv) Headache

Which two signs are for malaria?

- A. (i), (ii)
- B. (iii), (iv)
- C. (ii), (iv)
- D. (i), (iii)

16. Yellow fever is immunized at the same time with \_\_\_\_

- A. Polio
- B. Tetanus
- C. Measles
- D. Pertusis

17. Which one is an importance of HIV/AIDS testing?

- A. To know how many people are infected
- B. To know people to be employed
- C. To seek treatment for the infected
- D. To know how soon death will come

18. Which statement is correct?

- A. Child start shedding teeth at 6 years

B. Molars are shed last

C. Canines are shed first

D. Deciduous replace permanent teeth.

19. Which food maintains our teeth.

- A. Cakes
- B. Milk
- C. Biscuits
- D. Sweets

20. Which body fluids cannot contain HIV?

- A. Blood
- B. Semen
- C. Saliva
- D. Urine

21. Which planet is the largest in size.

- A. Neptune
- B. Saturn
- C. Earth
- D. Jupiter

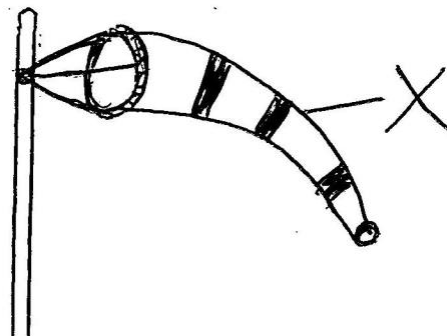
22. Which material is used for mounting planets on the soft board during modeling

- A. Glue
- B. Thorns
- C. Cellotape
- D. Manilla

23. Clouds that bring rain are \_\_\_\_

- A. White
- B. High in the sky
- C. Mountainous
- D. Feathery

24. The drawn weather instrument was constructed by std 5



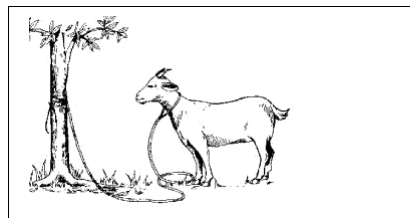
Part X is made from \_\_\_\_

- A. Manila paper
- B. Sheet of metal
- C. Mosquito net
- D. Polythene bag

25. Lucerne provides livestock with \_\_\_\_

- A. Vitamins
- B. Carbohydrates
- C. Proteins
- D. Minerals

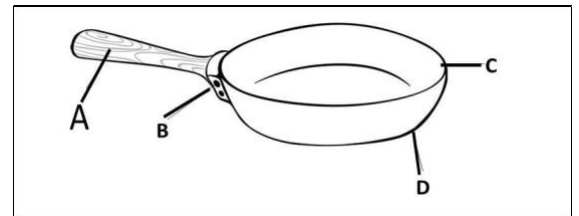
26. In the shown picture the farmer is practicing



- A. Paddockking
  - B. Tethering
  - C. Strip grazing
  - D. Zero grazing
27. Fish meal is \_\_\_\_
- A. Pasture
  - B. Concentrate
  - C. Fodder
  - D. Conserved
28. Which list has egg laying animals only?
- A. Bat, Whale, Platypus
  - B. Whale, Birds, Frogs
  - C. Frogs, Bat, Birds
  - D. Platypus, Snake, Crocodile
29. A water borne disease that is characterized with blood stained urine is prevented by \_\_\_\_
- A. Treating drinking water
  - B. Wearing protective clothes
  - C. Eating clean foods
  - D. covering pit latrines
30. Which use of water is in the same group as swimming?
- A. Fountain
  - B. Washing
  - C. Fishing
  - D. Transport
31. Splash erosion
- A. Make small holes
  - B. Makes deep channels
  - C. Makes top soil missing
  - D. Makes shallow channels
32. Which group correctly shows traditional and modern food preservation methods

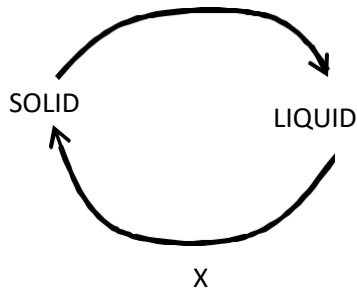
<b>Traditional</b>	<b>Modern</b>
A. Drying	freezing
B. Smoking	salting
C. Freezing	canning
D. Canning	drying

33. Which methods of food preservation is used in preserving maize?
- A. Smoking
  - B. Freezing
  - C. Canning
  - D. Drying
34. Which food provides energy?
- A. Beans
  - B. oils
  - C. Meat
  - D. Mango
35. Which food is NOT important for a child suffering from Kwashiorkor.
- A. Rice
  - B. Eggs
  - C. Meat
  - D. Groundnuts
36. Which one is a source of light \_\_\_\_
- A. Moon
  - B. Venus
  - C. Mercury
  - D. Fire
37. Which part is made up of poor conductor of heat?

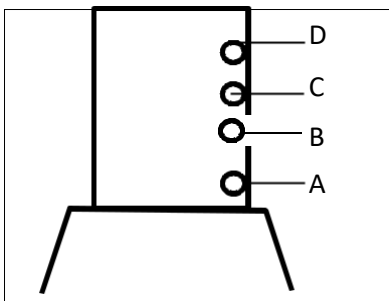


38. Heat transfer in liquids is the same as in \_\_\_\_
- A. Vacuum
  - B. Air
  - C. Wood
  - D. Metals
39. Which one of the following is an artificial way of lighting a house?
- A. Open doors
  - B. Lighting a torch
  - C. Transparent roofs
  - D. Open windows
40. Pupils in a school hear the ringing of a bell because sound \_\_\_\_
- A. Travels in all direction
  - B. Can be reflected
  - C. Is produced by vibrations
  - D. Is of different types

41. Which one is a use of heat
- Seeing
  - Alerting
  - Cooking
  - Warning
42. Which state of matter is a solid.
- Flour
  - Paste
  - Steam
  - Juice
43. Which characteristics of matter is definite for solids, liquids and gases.
- Colour
  - Shape
  - Volume
  - Mass
44. Which change of states of matter is marked X?

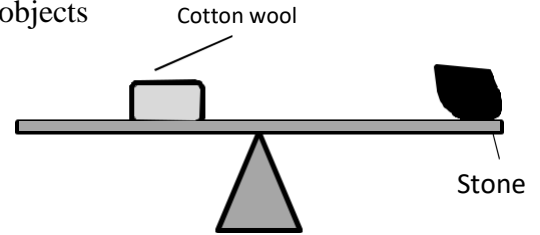


- Melting
  - Evaporation
  - Condensation
  - Freezing
45. Which materials can sink and float respectively.
- | <b>Sink</b>   | <b>Float</b> |
|---------------|--------------|
| A. Bottle top | seeds        |
| B. Stone      | needle       |
| C. Wood       | nail         |
| D. Steel wool | bottle top   |
46. The best part to place water tap is the one marked \_\_\_



47. Which type of soil is good for modeling?
- rough soil
  - Has best drainage
  - Soil from an ant hill
  - With a lot of organic matter.

48. Which sentence is correct about the two objects



- A stone is heavier than cotton wool.
  - Cotton wool is heavier than the stone
  - Cotton wool and stone are equal
  - Cotton wool is lighter than a stone
49. To cut piece of wood we use a \_\_\_
- Hammer
  - Jembe
  - Saw
  - Panga
50. Which maintenance practice is done to all tools?
- Cleaning before use
  - Oiling and greasing
  - Proper storage
  - Sharpening