

443/2

— **AGRICULTURE** —
(THEORY)

Paper 2

Apr. 2021 – 2 hours



Name Index Number

Candidate's Signature Date

Instructions to candidates

- (a) Write your name and index number in the spaces provided above.
- (b) Sign and write the date of examination in the spaces provided above.
- (c) This paper consists of **three** sections; **A, B** and **C**.
- (d) Answer **all** the questions in sections **A** and **B**.
- (e) Answer any **two** questions in section **C**.
- (f) All answers should be written in the spaces provided.
- (g) **This paper consists of 16 printed pages.**
- (h) **Candidates should check the question paper to ascertain that all the pages are printed as indicated and that no questions are missing.**
- (i) **Candidates should answer the questions in English.**

For Examiner's Use Only

Section	Question	Maximum Score	Candidate's Score
A	1–17	30	
B	18–21	20	
C		20	
		20	
Total Score		90	



SECTION A (30 marks)

*Answer **all** the questions in this section in the spaces provided.*

1. State **two** functions of walking area in a zero grazing unit. (1 mark)

.....
.....

2. Give **four** characteristics of succulent roughages. (2 marks)

.....
.....
.....
.....

3. State **four** symptoms of contagious abortion. (2 marks)

.....
.....
.....
.....

4. State **four** factors considered when selecting eggs for marketing. (2 marks)

.....
.....
.....
.....

check www.freekcepapers.com for free learning material

5. State **four** maintenance practices that should be carried out on a hoof cutter. (2 marks)

.....
.....
.....
.....

6. State **four** limitations of a tractor as a source of power on the farm. (2 marks)

.....
.....
.....
.....

7. Name **four** beef cattle breeds. (2 marks)

.....
.....
.....
.....

8. State the origin of each of the following dairy cattle breeds: (1 mark)

- (a) Friesian
- (b) Ayrshire

9. State **four** control measures for foot rot. (2 marks)

.....
.....
.....
.....

(2 marks)

10. State **four** signs of heat in pigs.

.....
.....
.....
.....

956

(1 mark)

11. State **two** categories of livestock parasites.

.....
.....

(1 mark)

12. Name **two** types of calf pens used in cattle production.

.....
.....

13. State **four** ways in which identification in livestock production is important.

(2 marks)

.....
.....
.....
.....

0596

14. State **four** preventive measures for livestock diseases.

(2 marks)

.....
.....
.....
.....



15. State **four** reasons for castration in livestock production. (2 marks)

.....

.....

.....

.....

16. Name **four** causes of livestock diseases. (2 marks)

.....

.....

.....

.....

17. State **four** methods of fish preservation. (2 marks)

.....

.....

.....

.....

check www.freekcsepapers.com for free learning material

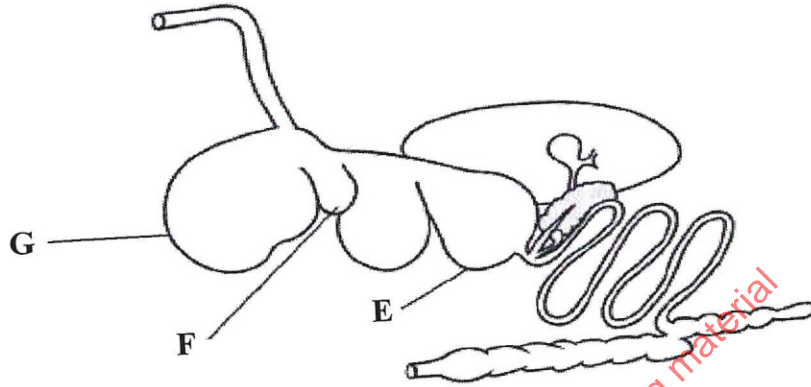
(15/06)



SECTION B (20 marks)

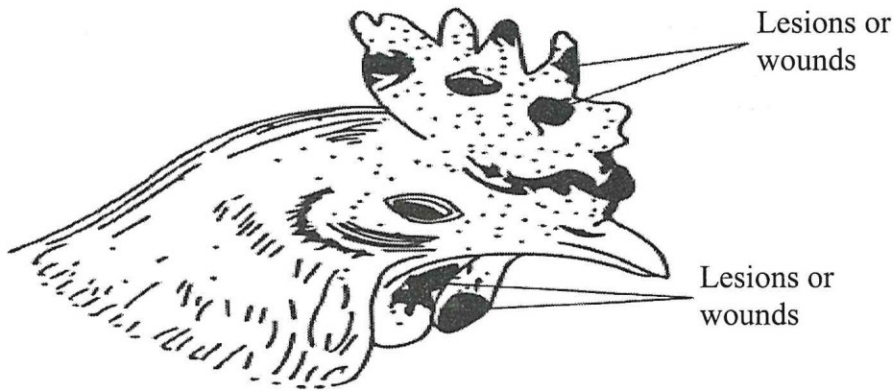
Answer **all** the questions in this section in the spaces provided.

18. Below is an illustration of the digestive system of livestock.



- (a) Name **one** livestock with the digestive system illustrated above. (1 mark)
.....
- (b) Name the part labelled:
 - E (1 mark)
 - F (1 mark)
- (c) State **two** functions of the part labelled part G. (2 marks)
.....
.....
.....

19. Below is an illustration of a bird infected with a poultry disease.



(a) (i) Identify the disease. (1 mark)

.....

(ii) Name another body part also affected by the lesions or wounds. (1 mark)

.....

(b) State **two** predisposing factors of the disease. (2 marks)

.....

.....

(c) State **one** control measure of the disease. (1 mark)

.....

.....

check www.freekcepapers.com for free learning material

20. Below is an illustration of a practice carried out in poultry.



Before practice



After practice

- (a) (i) Identify the practice. (1 mark)

.....

- (ii) Give **one** reason why the use of a hot iron is recommended for the practice illustrated. (1 mark)

.....

.....

- (b) Name **two** poultry vices controlled by the practice illustrated. (2 marks)

.....

.....

- (c) State **one** feeding practice that helps to control these poultry vices. (1 mark)

.....

.....

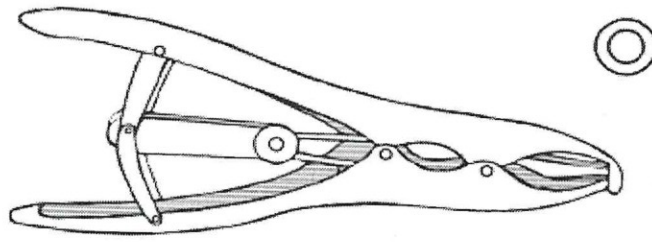
check www.freekcsesepapers.com for free learning material

0326

1536



21. Below is a diagram of a tool used in livestock rearing.



(a) Identify the tool. (1 mark)

.....

(b) State **two** uses of the tool. (2 marks)

.....

.....

(c) Give **two** reasons why farmers prefer using the tool. (2 marks)

.....

.....

check www.freekcsepastpapers.com for free learning material



check www.freeksepastpapers.com for free learning material

check www.freekcsepapers.com for free learning material

check www.freekcsepapers.com for free learning material

check www.freekcsepapers.com for free learning material

956

1596

check www.freekcsepastpapers.com for free learning material



THIS IS THE LAST PRINTED PAGE.

Kenya Certificate of Secondary Education, 2020

443/2

910114